

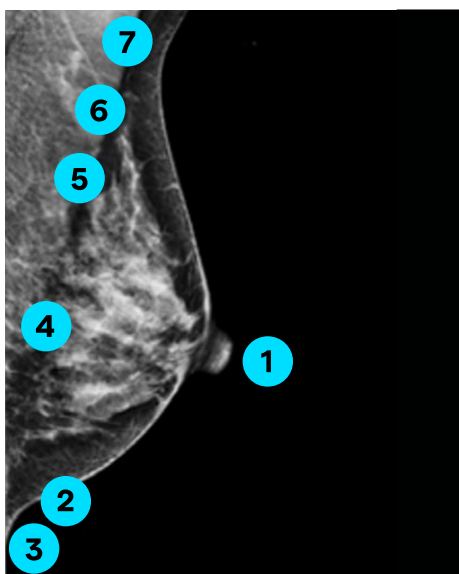
Positioning

Volpara® Analytics™ Technologist Training

Notes

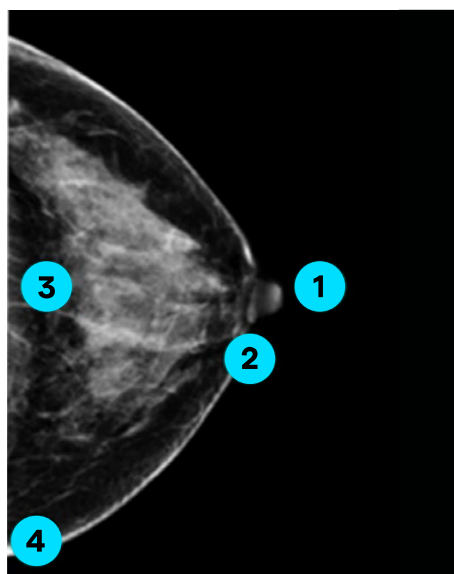
- Every CC and MLO view is evaluated by the Volpara® TruPGMI™ clinical function
- Volpara TruPGMI categorizes images based on metrics: how well they met, partially met, or didn't meet the metrics.

Volpara TruPGMI Metrics for MLO View



- 1 Nipple in profile
- 2 Inframammary fold (IMF) visible
- 3 Inferior breast tissue has no cutoff
- 4 Pectoral muscle length
- 5 Pectoral muscle shape
- 6 Pectoral muscle adequacy
- 7 No pectoral skin folds

Volpara TruPGMI Metrics for CC View



- 1 Nipple in profile
- 2 Nipple in midline of imaged breast
- 3 Posterior nipple line (PNL) within 1 cm of PNL on MLO view
- 4 Breast tissue has no cutoff

Perfect

Highest Diagnostic Quality

This mammogram is an example of excellent work by the technologist.

Good

This mammogram is high quality.

Moderate

This mammogram is acceptable quality; technologist would be unlikely to repeat image(s).

* Extenuating circumstances, such as body habitus or mobility issues, may limit the technologist's ability to obtain an adequate study.

Inadequate^{**}

Lowest Diagnostic Quality

This mammogram is poor quality; technologist might repeat image(s).

** Mosaic or tiled images may be categorized as Inadequate.

Contact

Questions or issues, please contact support@volparahealth.com

Compression

Volpara Analytics Technologist Training

Notes

- Compression is critical to image quality
- Volpara measures and displays compression in pressure (kPa)
- Pressure (kPa) depends on
 - Amount of applied force (dN, N, or lb.)
 - The contact area between the breast and the paddle
- Target compression is found to increase cancer detection¹

Breast Size, Force, and Pressure: Target Range*

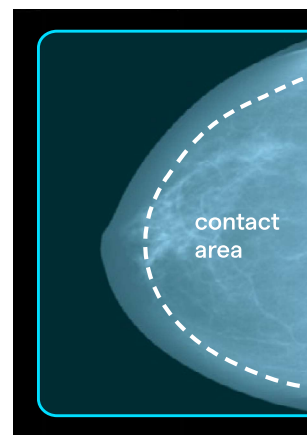
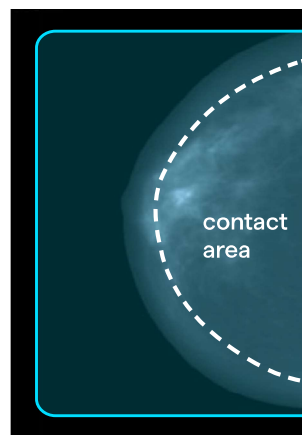
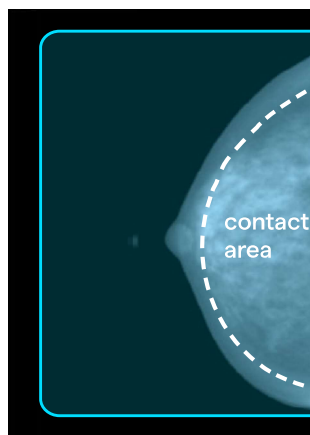
Pressure = Force ÷ Area

Breast size reference:

Small breast approx.
0–500 cm³

Medium breast approx.
500–1200 cm³

Large breast above approx.
1200 cm³



Applied Force

*Approx. values

7–16 lb.
(31–73 N)

14–30 lb.
(63–135 N)

17–37 lb.
(77–165 N)

Pressure Result

7–15 kPa

7–15 kPa

7–15 kPa

Performance and Benchmarks

Weighted 60/40 in favor of positioning over compression performance.

A score of 4 would mean 100% of images were Perfect or Good and in the target compression range.

Focus	Below 1.62
Okay	1.62 - 2.04
Global Median	2.05 - 2.26
Excellent	2.27 or more



Contact

Questions or issues, please contact support@volparahealth.com

References

1. Holland et al. Breast Cancer Research (2017) 19:126

Data Interpretation

Volpara Analytics Technologist Training

Notes

- Benchmarks have been created to provide positive performance feedback that is actionable and transparent
- Color coding is used to easily visualize high performance areas and areas needing focus

Benchmarks

- Analytics 3.0 benchmarks are based on over 3 million images from more than 2,000 technologists
- For each metric (Quality, Positioning, and Compression) all scores were ranked from highest to lowest and split into four percentile categories
- Where an individual score lands in a percentile category designates its assignment as either Excellent, Global Median, Okay, or Focus

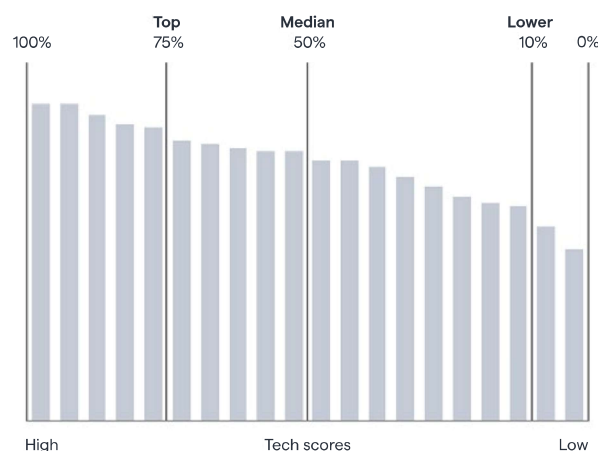
75% - 100%	Excellent
50% - 75%	Global Median
10% - 50%	Okay
0% - 10%	Focus

Color Coding

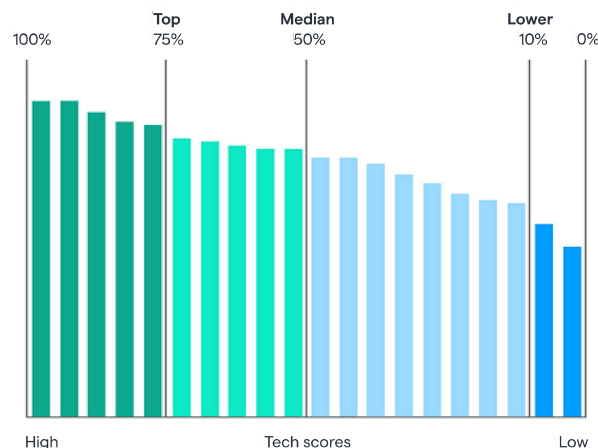
- Each benchmark is color coded making it easy to visualize performance
- This color coding is reflected through the application on all metric driven graphics

Key	You'll see the color when
● Focus	A particular metric needs attention
● Okay	There is room for improvement on a particular metric
● Global Median	You are on par with global averages
● Excellent	High quality performance has been achieved

Benchmarks defined



Benchmarks defined



Contact

Questions or issues, please contact support@volparahealth.com